



CHILDREN'S HEALTH SUMMIT BREAKOUT SESSIONS GUIDE

We look forward to welcoming you to the 2025 Children's Health Summit, where we will present the latest data from our triennial Community Health Needs Assessment.

During this event, you will have the opportunity to attend two breakout sessions - one in the morning, and another in the afternoon. Topics covered will include:

- Access to Healthcare Services
- Child & Youth Mental Health
- Violence & Injury
- Housing & Neighborhood Conditions

When registering, you will rank your preferred sessions. While we will do our best to place you in your top two preferred sessions, we cannot guarantee this due to space considerations.

During the sessions, you will have the chance to review topic-specific data collected as part of the needs assessment, ask questions, and provide valuable feedback on how Children's Mercy can collaborate with the community to address issues impacting children's health.

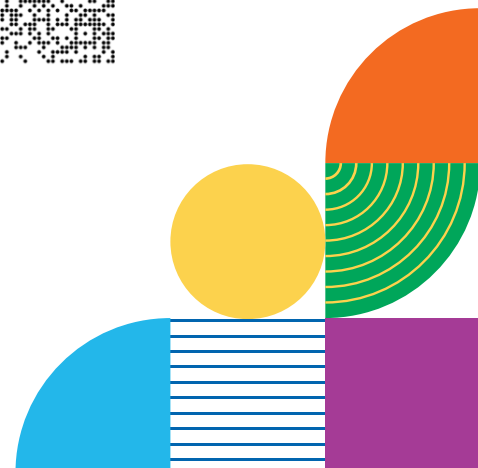
EVENT DATE & TIME

Tuesday, March 25, 2025
8 a.m. - 3 p.m.

LOCATION

Kauffman Foundation Conference Center
4801 Rockhill Road
Kansas City, MO 64110

Scan the QR code to learn more about Children's Mercy's work in the community.



WHAT TO EXPECT

The Children's Health Summit serves as a platform for Children's Mercy to present the findings of its triennial Community Health Needs Assessment (CHNA) to the community.

Participants will learn about our methods for collecting data, hear insights from our community-based focus group conversations, and get to provide feedback on how Children's Mercy can work collaboratively with the community to foster a world of well-being for all children.

Lunch will be provided. All participants are welcome to stay for an optional networking opportunity to connect with other community health leaders.

CHILDREN'S HEALTH SUMMIT AGENDA

Morning

8 a.m.	Registration
9 a.m.	Welcome Message
9:05 a.m.	Morning Keynote Address
9:25 a.m.	Break
9:35 a.m.	CHNA Overview Panel Discussion
10 a.m.	Break & Travel
10:15 a.m.	Morning Breakout Session
11:30 a.m.	Lunch

Afternoon

12:30 p.m.	Break & Travel
12:45 p.m.	Afternoon Breakout Session
2 p.m.	Break & Travel
2:15 p.m.	Afternoon Keynote Address
2:25 p.m.	Wrap-Up & Thank You
2:30 p.m.	Networking (Optional)

MORE THAN JUST A MANDATE

The Community Health Needs Assessment is an actionable plan designed to enhance the health and well-being of our community.



CONNECT WITH US

www.childrensmercy.org/in-the-community

Children's Mercy | Office for Community Impact
communityplanning@cmh.edu



in academic affiliation with